

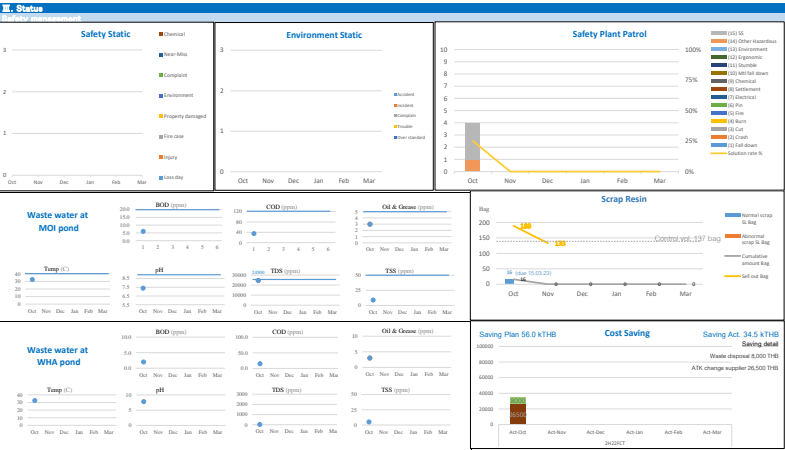
ภาคผนวก ข-24

HSE Department Yearly Plan 2022

S and I Specialty Polymers : Health & Safety & Environment (HSE) Dept. FY 2022 2H Action plan(Mgr)

1st October:2020
S and I Specialty Polymers

FY 2022 CEO Policy		FY 2022 HSE Policy	
Policy	Challenge the future growth of our company	Policy	Push forward the personal development/ worksites and facilities by increasing the level of digital technology
Basic Strategy	0. Health and Safety first 1. Challenge to production innovation ① Challenge to maximum production ② Efficient production (Reduction of energy and lost time) 2. Improving customer trust ① Quality improvement (Fitting grade of each customer) ② Stable supply system (Promotion of BCP) 3. Strengthen business structure ① Promotion of ESG management ② Activation of Kaizen activities	Basic Strategy	1. Utilization of digital technology 1.1 Employee Involvement 1.2 Safety to safety convenience system 2. Compliance government regulation and enforcement ISO 14001, EIA measures, EHS audit 3. Strengthen collaboration in finding risk Appropriately emergency response BCP 4. Recognition by the social 5.1 CSR development base on ESG 5.2 Build credibility with rewards
	Target		Work safely 2,850 days Zero Accident without loss man-day Zero Environment Accident Zero Safety and Environmental impact complain from outside
	Vision 2030		Make the company a place where employee can work with a peace of mind in a safe environment
FY22_R.BUD: Sales 2,963 OP1 141 Mil THB Production Volume 2022 27,205 mt (163.9 mt/day) FY22 57,261 mt (164.1 mt/day)		Target	
Create a rewarding company ① Challenge the goal with the customer ② Employee growth through successful experiences		Vision 2030	



Control Item & Important Item		FY21		FY22		Actual						
Control Item		1H	2H	1H	2H	2H						
		Result	Result	Result	Target	Oct	Nov	Dec	Jan	Feb	Mar	Summary
A Safety and Environmental management	Safety Zero Accident/Incident	0/1	0/0	0/1	0/0							
	2,850 days - Zero accident without loss man-day	2,801	2,485	2,668	2,850							
	Safety improvement of plant patrol	92%	93%	96%	96%							
B Reliable implementation of routine work and enforcement	Environment Zero Accident/Incident	0/0	0/1	0/1	0/0							
	SDM Zero safety-envi. Accident and zero Covid-19 infection		0		0	N/A						
	Comply with Safety/Env. EIA monitoring/Hazardous chem.	100%	100%	100%	100%							
C Expand production capacity	Correspondence to compliance audit by EHS	-	-	On plan	81							
	Renewal license	No NC	No NC	with in Dec	N/A							
	ISO 14001 internal audit	No NC	No NC	No NC	N/A							
D Safety and Environmental Development	Appropriate management of scrap resin control lead time to sell	40.35	41.16	On plan	On plan							
	Raise safety & environment knowledge	-	-	Over time	Not over time							
	Appropriately emergency response BCP	-	-	6	1 sign/month							
E Recognition by the social	Decrease NCDs disease in health employees	-	-	Manual	4							
	No complain from outside	Zero	Zero	No complain	No complain							
	Follow on CSR plan	100%	100%	100%	100%							
F Human resource development	CSR development base on ESG	1,211	2,215	2,381	2,289							
	Budget management (k. baht)	207	147	104	56							
	Cost savings (k. baht)	2	2	2	2							
Increase knowledge other work	Activity improvement for safety/environment	2	2	2	2							
	Increase knowledge other work	2	2	2	2							

Important Item		FY2022 1H Target						
Subject		Oct	Nov	Dec	Jan	Feb	Mar	Summary
A Safety and Environment management	Safety management	0/0	0/0					
	Zero safety accident/incident	0/0	0/0					
	Implement PPS. Matrix with WHA	1 week process	0					
A2 Improvement of safety and environment	Review and confirm safety procedures	2	0					
	Safety Environment monthly meeting	6/3	1/3					
	Implementation of KYT	42	17					
A3 Environment management	Confirmation of safety improvement by plant patrol	95%	95%					
	Start-on process progress of safety environment record	1 Project	0	1				
	Activity improvement for the safety environment record	2	0					
B Reliable implementation of routine work and enforcement	Environment management	0/0	0/0					
	Zero environment accident/incident	0/0	0/0					
	Zero emergency environment case in SDM	0	N/A					
C Expand production capacity	Scrap resin management. Control scrap resin lead time to sell	Not over due lead time	0					
	And reduce operational storage rate	<137 bag	16					
	Air pollution, wastewater, waste industrial management	Progress on plan (optimal)	On plan					
D Safety and Environmental Development	optimal area and plan	2	0					
	Review and confirm environment procedures	2	0					
E Recognition by the social	Basic safety & environment knowledge	1 sign/month	1					
	Start project of safety environment awareness	1 Project	N/A					
	Set emergency response BCP	Set up system	N/A					
F Human resource development	Meeting with each department	All days	N/A					
	Set framework of employee participate	Set criteria	N/A					
	Make new FY2022 CSR plan	New plan	N/A					
B Reliable implementation of routine work and enforcement	Creative CSR and Performance base on ESG management	100% (On plan)	On plan					
	Follow on CSR plan	100% (On plan)	On plan					
	Conflicting and action of the legal	100%	100%					
C Expand production capacity	Improvement of safety/environmental management/tradition	100%	100%					
	PSM project management	Entered audit	N/A					
	Emergency Exercise (Fire drill)	1	N/A					
D Safety and Environmental Development	Comply with EIA measures	On plan	On plan					
	ISO 14001 surveillance/ internal external audit	No NC	N/A					
	Correspondence to compliance audit by EHS	100%	93%					
E Recognition by the social	Review risk assessment and related to SDG on time	All work	4					
	Review environment aspect	All department	4					
F Human resource development	Kaizen project	Large kaizen	1	4				
	Play on Kaizen	1	0					
	Increase knowledge other work	2	0					